

UPRIGHT REACH - IN FREEZERS



ES - Series

Top Mounted
Condensing Unit

MODELS: ESF1
ESFH2
ESF2
ESWF2
ESF3

Project / Customer _____

Item No. _____

Model No. _____



ESF1



ESFH2



ESF2



ESWF2



ESF3

Please visit our website for updated [Energy Efficiency](#) information.

Cabinet Construction

Heavy duty 430 stainless steel, and galvanized steel finished top, bottom and back wall of exterior. High quality 304 stainless steel interior, ABS evaporator drain cover. Insulated with 2.5" thick high density foamed-in-place polyurethane foam. Four 4" diameter casters (front casters with brakes). Door heater installed around inside cabinet frame to prevent moisture build up.

Refrigeration System

- Self-contained condensing unit located at top of cabinet for high performance
- Oversized condenser and evaporator coil cools to set temperature in a minimum time period and maintains it
- Environmentally friendly CFC free R-404A refrigerant
- Adjustable defrost cycle between every 3 to 12 hours with 400 watt heater, time initiated, and both temperature and time terminated for fail-safe backup
- Automatic evaporator fan motor delay on defrost cycle
- Copper tube and aluminum fin evaporator with anti-corrosive coating
- Energy efficient condensate drain pan located at bottom of cabinet constructed of anodized aluminum
- Two pressure relief ports located at exterior back wall and top of cabinet for rapid re-entry
- Interior airflow backguard to ensure proper air circulation
- Pre-wired and ready to plug, 115V/60Hz/1Ph, NEMA-5-15P, but model ESF3 (230V/60Hz/1Ph) without plug

Doors

- 430 stainless steel exterior with 304 stainless steel interior
- Insulated with 2.5" thick foamed-in-place polyurethane foam
- Rounded corners for a sleek and modern appearance
- Heavy duty adjustable torsion spring self-closing door system
- One piece snap-in magnetic door gasket for easy replacement
- Heavy duty recessed door handles that stay out of the way
- Door locks

Lighting

- Safety shielded incandescent interior lighting

Shelving

- Three epoxy coated wire shelves per section
- 304 stainless steel pilasters and shelf clips

Temperature Control

- Factory preset temperature, -4°F
- Setting temperature range from -10°F to 32°F
- Easy to read digital temperature display
- Easy to control temperature by simply pushing buttons on control box
- Microchip digital monitoring system provided with various functions for monitoring and maintaining ideal temperature



Warranty

2 Years - Parts & Labor
5 Years - Compressor
(2 year parts & labor warranty is for products installed on or after July 1st 2010. Products installed before the date will have 1 year warranty.)

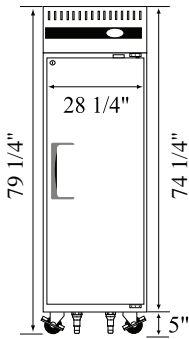
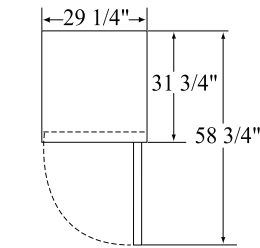
UPRIGHT REACH - IN FREEZERS



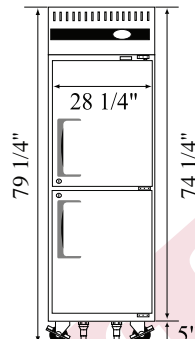
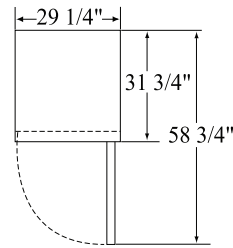
ES - Series

Top Mounted
Condensing Unit

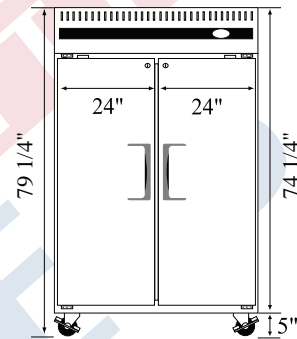
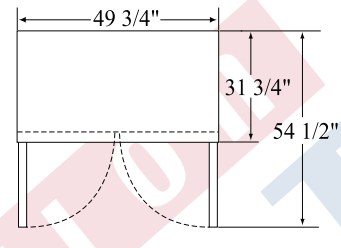
DIMENSIONS



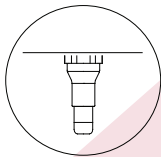
ESF1



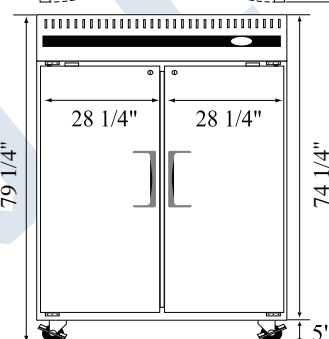
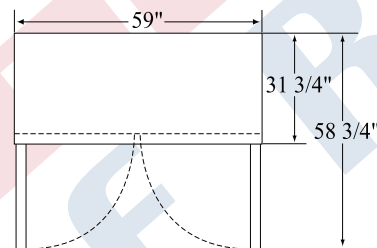
ESFH2



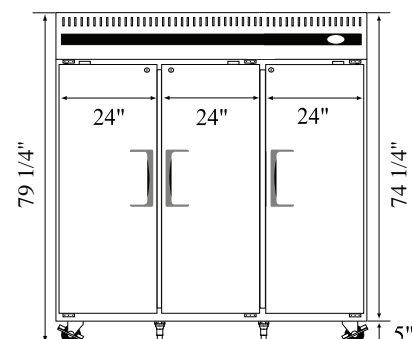
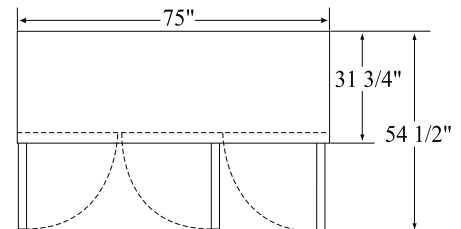
ESF2



Two additional front adjustable stainless steel clad ABS legs for model ESF1 and ESFH2 to prevent movement of unit when opening and closing a door, and for model ESF3 to support middle weight



ESWF2



ESF3

Model	Ref/ Fzr/ Dual	# of Doors	Capacity (Cu.Ft.)	HP	Refrigerant	# of Shelves	Power (V-Hz-Ph)	Amps	Crated Weight (LBS)	Exterior Dimensions (Inches)		
										L	D	H*
ESF1	Fzr	1	23	1/2	R-404A	3	115-60-1	7.57	289	29 1/4	31 3/4	74 1/4
ESFH2	Fzr	2(H)	23	1/2	R-404A	3	115-60-1	7.60	293	29 1/4	31 3/4	74 1/4
ESF2	Fzr	2	48	1/2 x 2	R-404A	6	115-60-1	15.12	448	49 3/4	31 3/4	74 1/4
ESWF2	Fzr	2	55	1/2 x 2	R-404A	6	115-60-1	15.12	503	59	31 3/4	74 1/4
ESF3	Fzr	3	71	1/3+ x 3	R-134A	9	230-60-1	12.36	650	75	31 3/4	74 1/4

* Height does not include 5" for castor.

Ref = Refrigerator Fzr = Freezer Dual = Ref & Fzr Combo H = Half Door