

MODEL

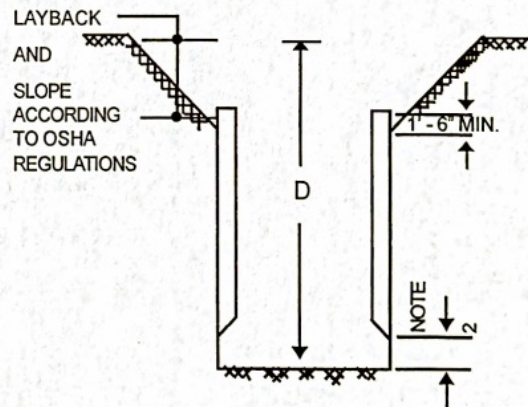
814 MHXLS

SERIAL NUMBER

118718 Lot # 370

REFERENCE TO OCCUPATIONAL SAFETY AND HEALTH ADMINISTRATION RULES AND REGULATIONS, VOL. 54, NO 209, PART 1926, SUBPART P

SHIELD SIZE		PSF RATING	MAXIMUM ALLOWABLE DEPTH OF CUT (FEET)		
			D		
		SOIL TYPE TO BE EXCAVATED			
HEIGHT (FEET)	LENGTH (FEET)	MAXIMUM LATERAL EARTH PRESSURE CAPACITY AT TRENCH BOTTOM IN POUNDS PER SQUARE FOOT	TYPE A Stiff, cohesive soil. 25 PSF per foot of depth	TYPE B Medium cohesive to granular soil. 45 PSF per foot of depth.	TYPE C Soft cohesive to submerged soil. 60 PSF per foot of depth
8	14	660	26	15	11
<p>LIMITATIONS IN USE OF TABLE</p> <ol style="list-style-type: none"> TRENCH SHIELD TO BE ASSEMBLED AND INSTALLED AS SHOWN AND IN ACCORDANCE WITH MANUFACTURER'S INSTRUCTIONS. EXCAVATION 2 FEET BELOW BOTTOM OF SHIELD IS PERMITTED WHEN NO LOSS OF SOIL FROM BEHIND OR BELOW THE BOTTOM OF SHIELD IS ENCOUNTERED. CONSULT MANUFACTURER WHEN RESTRICTION ON NOTE 2 IS NOT MET. ADDITIONAL SHIELDS MAY BE STACKED WITH NO PENALTY IN DEPTH OF CUT. DEPTHS OF CUTS SHOWN ARE BASED ON EXAMPLES OF VARIOUS SOIL CONDITIONS. VERIFY ACTUAL SOIL PRESSURES PRIOR TO EACH USE. ANY MODIFICATIONS OR ALTERATIONS NOT ALLOWED UNLESS APPROVED IN WRITING BY EFFICIENCY PRODUCTION, INC. DEPTH CERTIFICATION IS BASED ON SHORT TERM EXPOSURE WITH EXCAVATION OPEN A PERIOD NOT EXCEEDING 24 HOURS. <p>CONTINUED ON REVERSE SIDE</p>			<p>DESCRIPTION</p> <p>Clay, silty clay, sandy clay, clay loam, unconfined compressive strength of 1.5 tons per square foot or greater. (see note 8 on reverse side)</p>	<p>DESCRIPTION</p> <p>Clay with unconfined compressive strength greater than .5 TSF but less than 1.5 TSF, cohesionless gravel, silt, silt loam or sandy loam. (see note 9 on reverse side)</p>	<p>DESCRIPTION</p> <p>Clay with unconfined compressive strength less than .5 TSF submerged sand, fractured rock that stable. (see note 1 reverse side)</p>



CERTIFIED BY:

EFFICIENCY PRODUCTION, INC.
APRIL 1, 1999

1991 EFFICIENCY PRODUCTION
ALL RIGHTS RESERVED

MANUFACTURED UNDER ONE OR MORE OF THE FOLLOWING U.S. PATENT NUMBERS;
4,090,365-4,114,383-4,259,028
ONE OR MORE OF THE FOLLOWING CANADIAN PATENT NUMBERS: 1,062,683-1,062,684

USE THIS PRODUCT ONLY IN ACCORDANCE WITH APPLICABLE FEDERAL, STATE, OR LOCAL LAWS

Any use of this product not specifically described on this certificate could cause cave-in, collapse, or structural failure resulting in death or serious injury.