

VIN: 3HCDHSNRXGL409328
Stock #: 16268

2016 INTERNATIONAL PROSTAR

SPECIFICATIONS	
MILEAGE	258,110 / 258,111 (ECM)
ENGINE HOURS	8,534
ENGINE	NAVISTAR N13 13.0L 430 HP
ENG BRAKE	YES
ENG SERIAL	124KM2Y4406240
FUEL / TANKS	DIESEL - 2 ALUM 240 GAL TOTAL
EXHAUST	VERTICAL
TRANSMISSION	EATON-FULLER FM-15E310B-LAS 10 SPD AUTO
DRIVE OPTS	POWER STEERING, CRUISE
REAR END	MERITOR 2.64
AXLE TYPE	TANDEM - F 12,000 LB / R 40,000 LB
GVWR	52,000
FRAME	STEEL
SUSPENSION	AIR RIDE
WHEELBASE	175"
TIRE SIZE	295/75R22.5
WHEELS	F ALUMINUM / R STEEL
WHEEL 5TH	AIR SLIDE
AIR COND	YES, OPERATIONAL
INTERIOR COLOR	GREY
RADIO	AM/FM / CD, OPERATIONAL
MIRRORS	DUAL POWER
HIGH BACK SEATS	DUAL
PASSENGER SEAT	STATIONARY
EXTERIOR COLOR	WHITE
BUMPER	PAINTED
EXTERIOR OPTS	HEATED MIRRORS, CAB / ROOF FAIRINGS



BRAKES	
LEFT FRONT	RIGHT FRONT
24	23
LEFT REAR 1	RIGHT REAR 1
23	20
LEFT REAR 2	RIGHT REAR 2
21	23

TIRES & WHEELS			
LEFT FRONT		RIGHT FRONT	
11 / 32 BRIDGESTONE ALUMINUM		14 / 32 BRIDGESTONE ALUMINUM	
LEFT OUTER 1	LEFT INNER 1	RIGHT INNER 1	RIGHT OUTER 1
17 / 32 BRIDGESTONE STEEL	18 / 32 BRIDGESTONE STEEL	26 / 32 FIRESTONE STEEL	27 / 32 MICHELIN STEEL
LEFT OUTER 2	LEFT INNER 2	RIGHT INNER 2	RIGHT OUTER 2
14 / 32 GOODYEAR STEEL	16 / 32 BRIDGESTONE STEEL	16 / 32 BRIDGESTONE STEEL	16 / 32 GENERAL STEEL
FRONT TIRES: 295/75R22.5		REAR TIRES: 295/75R22.5	

ADDITIONAL TIRE DETAIL
MICHELIN TIRE 275/80R22.5

GENERAL OBSERVATIONS

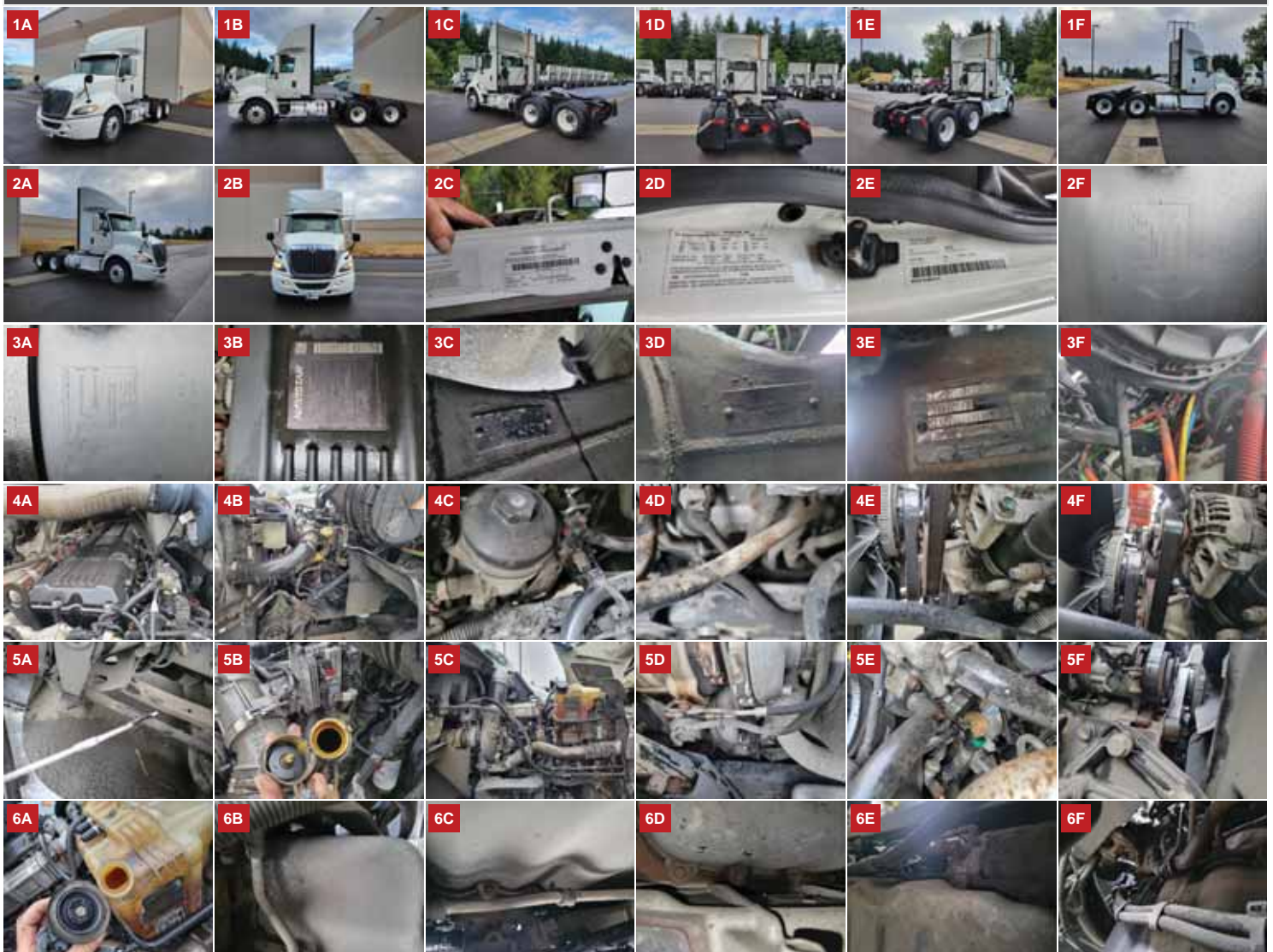
OIL MILKY?	NO	LIGHTS WORK?	YES - ALL
-------------------	----	---------------------	-----------

OIL LEAKS?	NO	WIPERS WORK?	YES
WATER LEAKS?	NO	GAUGES WORK?	YES - ALL
OIL IN COOLANT?	NO	AIR HORN WORKS?	YES
CLUTCH PLAY?	NA	CITY HORN WORKS?	YES
STARTS?	YES		
DRIVES	YES	DIESEL PARTICULATE FILTER	PASS

WEAR & TEAR DETAIL

DIAGNOSTICS	3 ACTIVE / 6 INACTIVE FAULTS DETECTED - SEE ECM REPORT
SEAT	PASSENGER SIDE STAINED
BUMPER	SCRATCHED
VISOR	PAINT PEELING
ROOF FAIRING	FAIRING PAINT CHIPPED
FENDERS	PAINT CHIPPED AND SCRATCHED
MIRROR	PASSENGER SIDE SCRATCHED
HEADLINER	STAINED

REPORT PHOTOS





REPORT DOCUMENTS

DIAGNOSTIC REPORT

VIN: 3HCDHSNRXGL409328

Model Year: 2016

Manufacturer:

COMPONENT	FAULT CODES	9 TOTAL / 3 ACTIVE / 6 INACTIVE
-----------	-------------	---------------------------------

ENGINE #1 - J1939	ACTIVE FAULT CODES (1)
-------------------	------------------------

Vehicle Make: International	Fault Description: Keyswitch Battery Potential	SPN 158
ECM Serial Number: 124KM2Y4406240	FMI Description: Data Valid but above Normal Operating Range - Least Severe Level	FMI: 15
ECM Model: 7571041515	Count: 1	

VIN: 3HCDHSNRXGL409328

INACTIVE FAULT CODES (0)

None

BRAKES - SYSTEM	ACTIVE FAULT CODES (0)
-----------------	------------------------

Vehicle Make: N/A	None
-------------------	------

ECM Serial Number: N/A

ECM Model: N/A

VIN: N/A

INACTIVE FAULT CODES (0)

None

TRANSMISSION #1 - J1939	ACTIVE FAULT CODES (0)
-------------------------	------------------------

Vehicle Make: N/A	None
-------------------	------

ECM Serial Number: N/A

ECM Model: N/A

VIN: N/A

INACTIVE FAULT CODES (1)

Fault Description: Transmission Primary Shift Selector	SPN 751
FMI Description: Root Cause not Known	FMI: 11
Count: 2	

UNKNOWN/RESERVED (SA)	ACTIVE FAULT CODES (1)
-----------------------	------------------------

ECM Serial Number:	Fault Description: Undefined	SPN 524285
ECM Model:	FMI Description: Special Instructions	FMI: 14
	Count: 1	

INACTIVE FAULT CODES (0)

None

DIESEL PARTICULATE FILTER	ACTIVE FAULT CODES (0)
---------------------------	------------------------

ECM Serial Number:	None
--------------------	------

ECM Model:

INACTIVE FAULT CODES (0)

None

SHIFT CONSOLE - PRIMARY -	ACTIVE FAULT CODES (0)
---------------------------	------------------------

ECM Serial Number:	None
--------------------	------

ECM Model:

INACTIVE FAULT CODES (2)

DIAGNOSTIC REPORT

VIN: 3HCDHSNRXGL409328

Model Year: 2016

Manufacturer:

COMPONENT FAULT CODES 9 TOTAL / 3 ACTIVE / 6 INACTIVE

Fault Description: Undefined SPN 3658
FMI Description: Voltage above Normal, or Shorted to High Source FMI: 3
Count: 12

Fault Description: Undefined SPN 3658
FMI Description: Mechanical System not Responding or out of Adjustment FMI: 7
Count: 7

INSTRUMENT CLUSTER #1 - ACTIVE FAULT CODES (0)

ECM Serial Number: None
ECM Model:

INACTIVE FAULT CODES (0)

None

BODY CONTROLLER - J1939 ACTIVE FAULT CODES (1)

ECM Serial Number: Fault Description: Headlamp low Beam Left #1 SPN 2653
ECM Model: FMI Description: Current below Normal or Open Circuit FMI: 5
Count: 8

INACTIVE FAULT CODES (3)

Fault Description: Undefined SPN 520650
FMI Description: Data Valid but above Normal Operational Range - FMI: 0
Most Severe Level
Count: 1

Fault Description: Undefined SPN 596
FMI Description: Data Valid but above Normal Operational Range - FMI: 0
Most Severe Level
Count: 5

Fault Description: Cab HVAC System Controller SPN 3985
FMI Description: Abnormal Update Rate FMI: 9
Count: 2

PARAMETERS

ENGINE #1 - J1939

Rated Horsepower	N/A	Engine Rated RPM	N/A
MIL Status	On, don't flash	Fuel Level	N/A
Battery Voltage	Not Available	Ignition Voltage	13.50 V
Engine RPM	600 RPM	Vehicle Speed	0 mph

DIAGNOSTIC REPORT

VIN: 3HCDHSNRXGL409328

Model Year: 2016

Manufacturer:

ENGINE #1 - J1939

Throttle Position	0 %	Brake Switch	Released
Clutch Switch	Depressed	Engine Operating State	N/A
Engine Intake Air Temperature	Not Available	Engine Intake Air Pressure	15.1 psi
Barometric Pressure	14.65 psi	Coolant Level	100 %
Coolant Temperature	77.0 °F	Oil Level	Not Available
Oil Temperature	70.0 °F	Oil Pressure	60.9 psi
DPF Status	Regen not Needed	Regen Status	Inactive
DPF Active Regen Inhibited Status	Inhibited	DPF Active Regen Inhibited Due to Inhibit Switch	Not Inhibited
DPF Regen Inhibit Switch	Inactive	DPF Regen Force Switch	Inactive
Exhaust Temperature 1	Not Available	Exhaust Temperature 2	190.9 °F
Exhaust Temperature 3	90.1 °F	DPF Intake Temperature	190.9 °F
DPF Outlet Temperature	90.1 °F	DPF Differential Pressure	0 psi

BRAKES - SYSTEM CONTROLLER - J1939

Battery Voltage	N/A	Ignition Voltage	N/A
Vehicle Speed	N/A	Brake Switch	N/A
Primary Pressure	N/A	Secondary Pressure	N/A

TRANSMISSION #1 - J1939

Battery Voltage	13.60 V	Ignition Voltage	13.25 V
Input Shaft Speed	601 RPM	Output Shaft Speed	0 RPM
Oil Level	N/A	Oil Life Remaining	N/A
Oil Temperature	N/A	Service Indicator	N/A
Range Selected	N/A	Range Attained	N/A

LIFE DATA

ENGINE #1 - J1939

Distance	258110.81 mi	Hours	8534.50 hr
Fuel Used	40593.8 gal	Average Fuel Economy	N/A
Engine Idle Hours	1786.75 hr	Engine Idle Fuel Used	1014.9 gal
PTO Hours	0.00 hr	PTO Fuel Used	0.0 gal
DPF Number of Inhibited Active Regen	0 counts	DPF Number of Manual Active Regen	0 counts
DPF Fuel Used	0.0 gal		

DIAGNOSTIC REPORT

VIN: 3HCDHSNRXGL409328

Model Year: 2016

Manufacturer:

TRIP DATA

ENGINE #1 - J1939

Distance	258110.81 mi	Fuel Used	40593.8 gal
Average Fuel Rate	Not Available	Idle Time	1000.00 hr
Vehicle Idle Fuel Used	1014.9 gal	Cruise	Not Available
Cruise Fuel Used	Not Available	DPF Active Regen Time	1 sec
DPF Number of Active Regens	1 counts	DPF Used	Not Available
Vehicle Speed Limit	62 mph	Cruise Control Speed Limit	62 mph