

VIN: 3HCDHSNR9GL409353
Stock #: 31603171

2016 INTERNATIONAL PROSTAR

SPECIFICATIONS	
MILEAGE	289,970 / 289,971 (ECM)
ENGINE HOURS	9,398
ENGINE	NAVISTAR N13 12.4L 430 HP
ENG BRAKE	YES
ENG SERIAL	124KM2Y4406342
FUEL / TANKS	DIESEL - 2 ALUM 240 GAL TOTAL
EXHAUST	SINGLE
TRANSMISSION	EATON FM-15E310B-LAS 10 SPD AUTO
DRIVE OPTS	POWER STEERING, CRUISE
REAR END	MERITOR 2.64
AXLE TYPE	TANDEM - F 12,000 LB / R 40,000 LB
GVWR	52,000
FRAME	STEEL
SUSPENSION	AIR RIDE
WHEELBASE	175"
TIRE SIZE	295/75R22.5
WHEELS	F ALUMINUM / R STEEL
WHEEL 5TH	AIR SLIDE
AIR COND	YES, OPERATIONAL
INTERIOR COLOR	GRAY
RADIO	AM/FM / CD, OPERATIONAL
MIRRORS	DUAL POWER
HIGH BACK SEATS	DUAL
PASSENGER SEAT	STATIONARY
EXTERIOR COLOR	WHITE
BUMPER	PAINTED
EXTERIOR OPTS	HEATED MIRRORS, CAB / ROOF FAIRINGS
COLLISION AVOIDANCE?	NO



BRAKES	
LEFT FRONT	RIGHT FRONT
24	27
LEFT REAR 1	RIGHT REAR 1
24	24
LEFT REAR 2	RIGHT REAR 2
23	24

TIRES & WHEELS			
LEFT FRONT		RIGHT FRONT	
22 / 32 BRIDGESTONE ALUMINUM		21 / 32 BRIDGESTONE ALUMINUM	
LEFT OUTER 1	LEFT INNER 1	RIGHT INNER 1	RIGHT OUTER 1
27 / 32 CONTINENTAL STEEL	27 / 32 FIRESTONE STEEL	27 / 32 CONTINENTAL STEEL	27 / 32 CONTINENTAL STEEL
LEFT OUTER 2	LEFT INNER 2	RIGHT INNER 2	RIGHT OUTER 2
27 / 32 CONTINENTAL STEEL	26 / 32 CONTINENTAL STEEL	21 / 32 CONTINENTAL STEEL	21 / 32 CONTINENTAL STEEL
FRONT TIRES: 295/75R22.5		REAR TIRES: 295/75R22.5	

GENERAL OBSERVATIONS

OIL MILKY?	NO	LIGHTS WORK?	YES - ALL
OIL LEAKS?	YES	WIPERS WORK?	YES

WATER LEAKS?	NO	GAUGES WORK?	YES - ALL
OIL IN COOLANT?	NO	AIR HORN WORKS?	YES
CLUTCH PLAY?	NA	CITY HORN WORKS?	YES
STARTS?	YES		
DRIVES	YES	DIESEL PARTICULATE FILTER	PASS

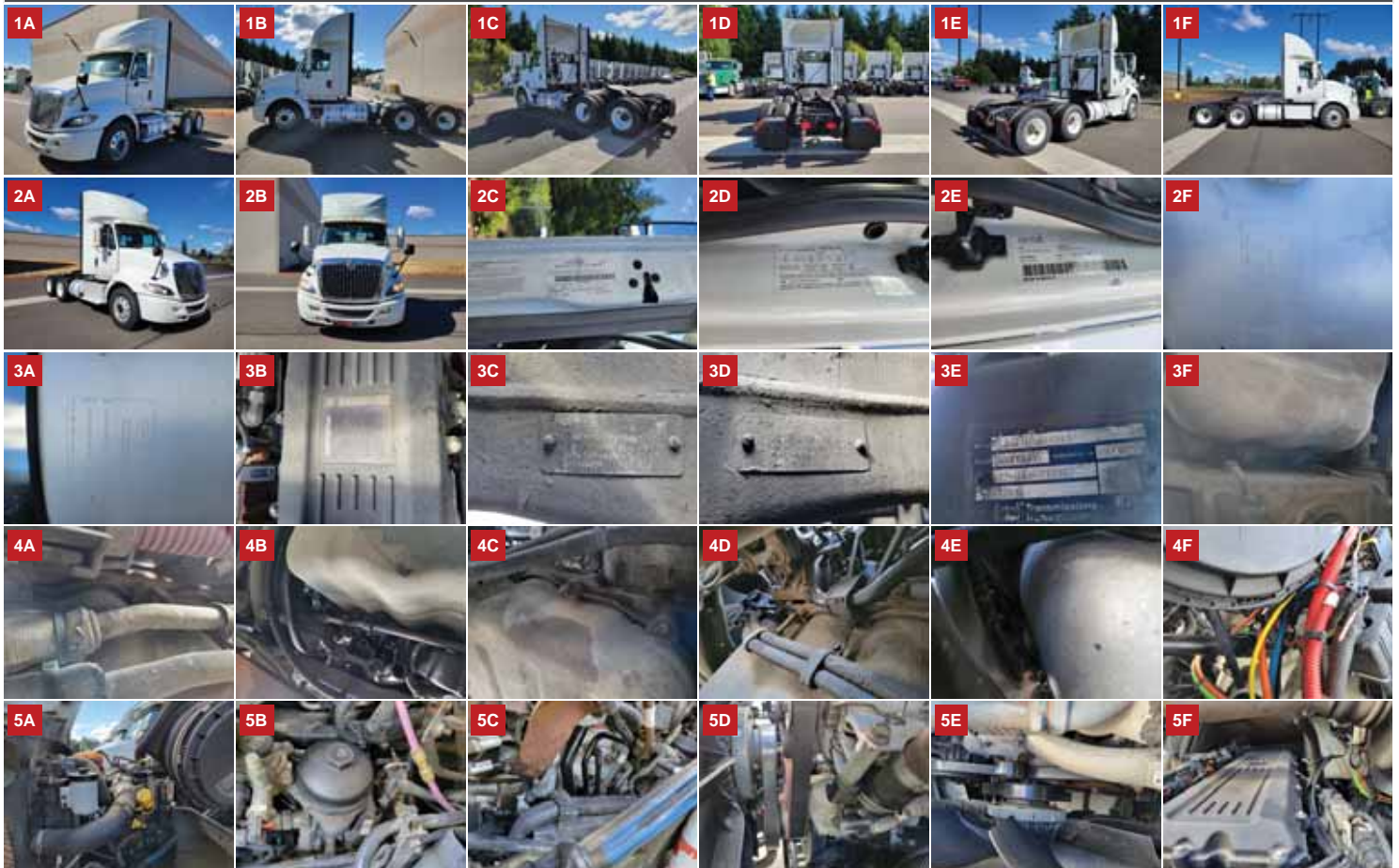
ADDITIONAL OBSERVATIONS

OIL LEAKING AT LEFT FRONT CORNER OF ENGINE

WEAR & TEAR DETAIL

DIAGNOSTICS	2 ACTIVE / 2 INACTIVE FAULTS DETECTED - SEE ECM REPORT
SEATS	STAINED
INTERIOR WALL	REAR PANEL DAMAGED
MIRRORS	HOUSINGS SCRATCHED
FENDERS	PAINT CHIPPED AND PEELING
DRIVERS DOOR	REAR EDGE PAINT DAMAGED
FAIRINGS	ROOF FAIRING PAINT CHIPPED
BUMPER	PAINT CHIPPED AND PEELING
WINDSHIELD	ROCK CHIPS
HEADLINER	STAINED
STEERING WHEEL	SURFACES WORN

REPORT PHOTOS





REPORT DOCUMENTS

DIAGNOSTIC REPORT

VIN: 3HCDHSNR9GL409353

Model Year: 2016

Manufacturer:

COMPONENT	FAULT CODES	4 TOTAL / 2 ACTIVE / 2 INACTIVE
ENGINE #1 - J1939	ACTIVE FAULT CODES (0)	
Vehicle Make: International	None	
ECM Serial Number: 124KM2Y4406342	INACTIVE FAULT CODES (0)	
ECM Model: 7571041515	None	
VIN: 3HCDHSNR9GL409353		
BRAKES - SYSTEM	ACTIVE FAULT CODES (0)	
Vehicle Make: N/A	None	
ECM Serial Number: N/A	INACTIVE FAULT CODES (0)	
ECM Model: N/A		
VIN: N/A	None	
TRANSMISSION #1 - J1939	ACTIVE FAULT CODES (0)	
Vehicle Make: N/A	None	
ECM Serial Number: N/A	INACTIVE FAULT CODES (1)	
ECM Model: N/A		
VIN: N/A	Fault Description: Transmission Primary Shift Selector	SPN 751
	FMI Description: Root Cause not Known	FMI: 11
	Count: 1	
UNKNOWN/RESERVED (SA)	ACTIVE FAULT CODES (1)	
ECM Serial Number:	Fault Description: Undefined	SPN 524285
ECM Model:	FMI Description: Special Instructions	FMI: 14
	Count: 1	
	INACTIVE FAULT CODES (0)	
	None	
SHIFT CONSOLE - PRIMARY -	ACTIVE FAULT CODES (0)	
ECM Serial Number:	None	
ECM Model:	INACTIVE FAULT CODES (0)	
	None	
DIESEL PARTICULATE FILTER	ACTIVE FAULT CODES (0)	
ECM Serial Number:	None	
ECM Model:	INACTIVE FAULT CODES (0)	
	None	

DIAGNOSTIC REPORT

VIN: 3HCDHSNR9GL409353

Model Year: 2016

Manufacturer:

COMPONENT FAULT CODES 4 TOTAL / 2 ACTIVE / 2 INACTIVE

INSTRUMENT CLUSTER #1 - ACTIVE FAULT CODES (0)

ECM Serial Number: None

ECM Model: **INACTIVE FAULT CODES (0)**

None

BODY CONTROLLER - J1939 ACTIVE FAULT CODES (1)

ECM Serial Number: Fault Description: Operator Input Device for Cab Climate Control SPN 1552
ECM Model: FMI Description: Data Erratic, Intermittent or Incorrect FMI: 2
Count: 1

INACTIVE FAULT CODES (1)

Fault Description: Tractor Front Fog Lights Command SPN 2387
FMI Description: Data Erratic, Intermittent or Incorrect FMI: 2
Count: 1

PARAMETERS

ENGINE #1 - J1939

Rated Horsepower	N/A	Engine Rated RPM	N/A
MIL Status	Off	Fuel Level	N/A
Battery Voltage	Not Available	Ignition Voltage	13.10 V
Engine RPM	601 RPM	Vehicle Speed	0 mph
Throttle Position	0 %	Brake Switch	Released
Clutch Switch	Depressed	Engine Operating State	N/A
Engine Intake Air Temperature	Not Available	Engine Intake Air Pressure	14.8 psi
Barometric Pressure	14.72 psi	Coolant Level	100 %
Coolant Temperature	84.2 °F	Oil Level	Not Available
Oil Temperature	78.1 °F	Oil Pressure	56.3 psi
DPF Status	Regen not Needed	Regen Status	Inactive
DPF Active Regen Inhibited Status	Inhibited	DPF Active Regen Inhibited Due to Inhibit Switch	Not Inhibited
DPF Regen Inhibit Switch	Inactive	DPF Regen Force Switch	Inactive
Exhaust Temperature 1	Not Available	Exhaust Temperature 2	172.4 °F
Exhaust Temperature 3	92.6 °F	DPF Intake Temperature	172.4 °F
DPF Outlet Temperature	92.6 °F	DPF Differential Pressure	0 psi

BRAKES - SYSTEM CONTROLLER - J1939

Battery Voltage	N/A	Ignition Voltage	N/A
Vehicle Speed	N/A	Brake Switch	N/A
Primary Pressure	N/A	Secondary Pressure	N/A

DIAGNOSTIC REPORT

VIN: 3HCDHSNR9GL409353

Model Year: 2016

Manufacturer:

TRANSMISSION #1 - J1939

Battery Voltage	13.10 V	Ignition Voltage	12.45 V
Input Shaft Speed	602 RPM	Output Shaft Speed	0 RPM
Oil Level	N/A	Oil Life Remaining	N/A
Oil Temperature	N/A	Service Indicator	N/A
Range Selected	N/A	Range Attained	N/A

LIFE DATA

ENGINE #1 - J1939

Distance	289971.19 mi	Hours	9398.55 hr
Fuel Used	44516.2 gal	Average Fuel Economy	N/A
Engine Idle Hours	2683.60 hr	Engine Idle Fuel Used	1484.8 gal
PTO Hours	0.00 hr	PTO Fuel Used	0.0 gal
DPF Number of Inhibited Active Regen	0 counts	DPF Number of Manual Active Regen	0 counts
DPF Fuel Used	0.0 gal		

TRIP DATA

ENGINE #1 - J1939

Distance	289971.19 mi	Fuel Used	44516.2 gal
Average Fuel Rate	Not Available	Idle Time	1000.00 hr
Vehicle Idle Fuel Used	1484.8 gal	Cruise	Not Available
Cruise Fuel Used	Not Available	DPF Active Regen Time	1 sec
DPF Number of Active Regens	1 counts	DPF Used	Not Available
Vehicle Speed Limit	62 mph	Cruise Control Speed Limit	62 mph